

## FATIGUE WARNING SYSTEM

Fatigue warning monitors like can be used to alert a driver as soon as he/she is falling asleep or not paying attention to the road for a determined period of time, protecting life and assets. It focuses entirely on the driver's alertness levels or inattention to the road ahead regardless of the time of day or weather conditions. Connecting this accessory to **Syrus 3G/4G** will send all events to **Pegasus IoT Cloud** for fleet operators to take actions or developers to build driver score dashboards using the API.

**PART NUMBER**  
**MR688-RS232**

Will work with reading glasses  
and even with sunglasses

Capture a photo when vehicle's  
turned on or off

Triggering a loud audible alarm to  
the driver to alert him/her while  
sending a message to the server



Max and minimum speed  
Threshold alerts and Photo taken

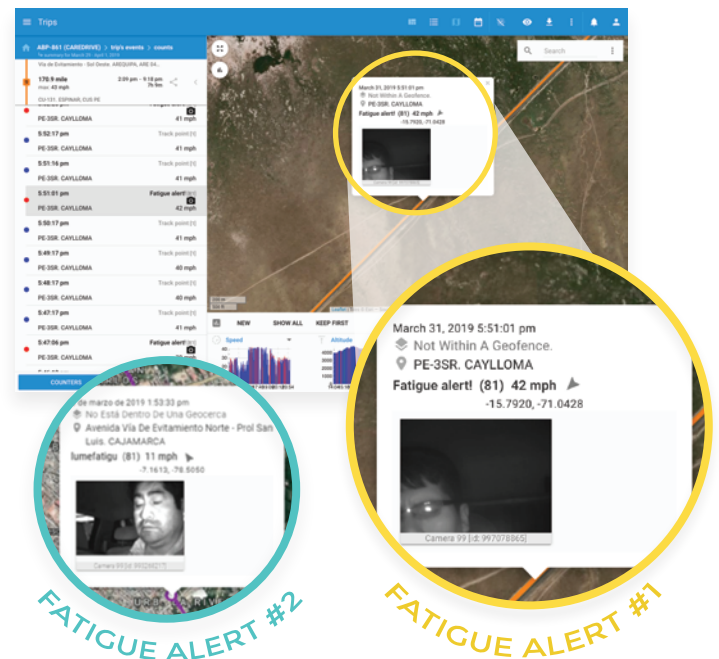
Compatible with Syrus 3G/4G IoT  
devices via RS232 Port to send  
all events to **Pegasus IoT Cloud**

Send an Alert and take a photo if  
a driver's not detected at a  
speed greater than 20mph

## TECHNICAL SPECIFICATIONS

ITEM	PARAMETER
Operating Voltage	DC 12V/24V
Minimum Operating Voltage	9V
Maximum Operating Voltage	32V
Working Current	12V power, about 100mA 24V power, about 60mA
Working Temperature	-10 ~ + 50
Storage Temperature	-45 ~ + 85
Detection Distance	60-90cm

**Pegasus**  
IoT Cloud



## PINOUT

PIN	COLOR	CABLE	DESCRIPTION
SYRUS 4G CABLES			
1	ORANGE	RS232_TX	Data transmitter (14 Pin Molex)
2	BLUE	RS232_RX	Data receiver (14 Pin Molex)
3	RED	POWER +	Power+, DC12V/DC24V (4 Pin Molex)
4	BLACK	POWER -	Power-, GND (4 Pin Molex)
SYRUS 4G CABLES			
1	ORANGE	RS232_TX	Data transmitter (14 Pin Molex)
2	PURPLE	RS232_RX	Data receiver (14 Pin Molex) - Brown for SL3G1645
3	RED	POWER +	Power+, DC12V/DC24V (4 Pin Molex)
4	BLACK	POWER -	Power-, GND (4 Pin Molex)
FATIGUE MONITOR CABLES			
1	RED	POWER +	Power+, DC12V/DC24V
2	BLACK	POWER -	Power-, GND
3	BLUE	Rxd	Data receiver
4	GREEN	Txd	Data transmission

## INSTALLATION DIAGRAM FOR SYRUS 3G OR SYRUS 4G

SYRUS 3G

SYRUS 4G

